

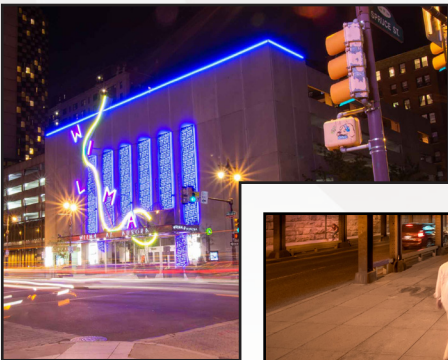
Version 5.5

# VIVID S 270 RGB PVC 24V



**For More Information**

**Toll Free: 1 (888) 580-6366**



**UNITED STATES**

Pacific Business Center  
1075 American Pacific Dr.,  
Ste. A Henderson, NV 89074

**CANADA**

264 Botsford Street,  
Suite 200 Moncton, NB  
E1C 4X7

GILLS reserves the right to make any design changes for continuous improvement which will not affect the overall appearance or performance.

[www.gills.com](http://www.gills.com)  
[www.ledneonflex.com](http://www.ledneonflex.com)

Light Dimension	0.45 x 1.14in (11.5x29mm)		
<b>Output</b>	<b>RGB</b>		
LED Light	Epistar or Nichia SMD LED Chip		
Max Run Length			
Single Feed	Full Load: 22.97ft (7m)	Dynamic Load: 32.81ft (10m)	
Double Feed	Full Load: 45.93ft (14m)	Dynamic Load: 65.62ft (20m)	
Light Surface	Round profile 270°		
Lumen Maintenance	70,000 Hours L70 @ 25°C : 90,000 L50 @ 25°C 50,000 Hours L70 @ 50°C : 70,000 Hours L50 @ 50°C		
<b>Electrical</b>			
Input Voltage	24V DC		
Power Consumption	3.66W/ft (12W/m)		
<b>Physical</b>			
LED Count	18 LEDs/ft (60 LEDs/m)		
LED Spacing	0.66in (16.67mm)		
Cutting Unit Length	3.94in (100mm) (6 LEDs)		
Thermal Management	Free air convection		
Fixture Connections	End, side & bottom lead wires		
Minimum Bend Diameter	4.72in (120mm) (Side Bending)		
<b>Temperature Ranges</b>			
Installation	32°F to 140°F (0°C to 60°C)		
Operating	-13°F to 140°F (-25°C to 60°C)		
Humidity	0-95% non condensing		
<b>Dependability</b>			
Warranty	5 Year Warranty		
<b>Safety</b>			
Certification	Tested to UL & CSA by Underwriters Laboratory for use in USA and Canada, complies with California Title 24 Requirements, Lighting Facts. Exceeds ANSI C78.377A, CE & RoHS Compliant.		
IP Rating	IP68 with appropriately rated accessories		

### Color Information

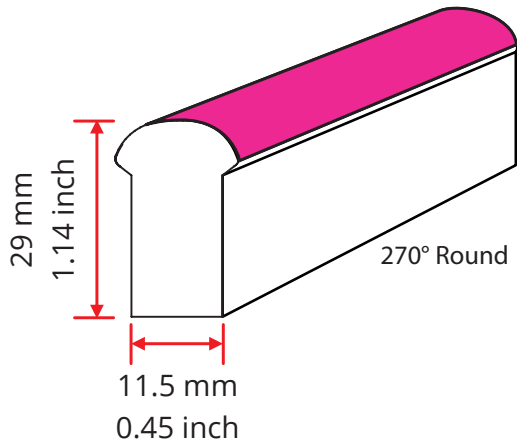
Color	CCT Wavelength
Red	620-630nm
Green	520-530nm
Blue	465-475nm
R+G+B (W)	N/A

### Lumen Count

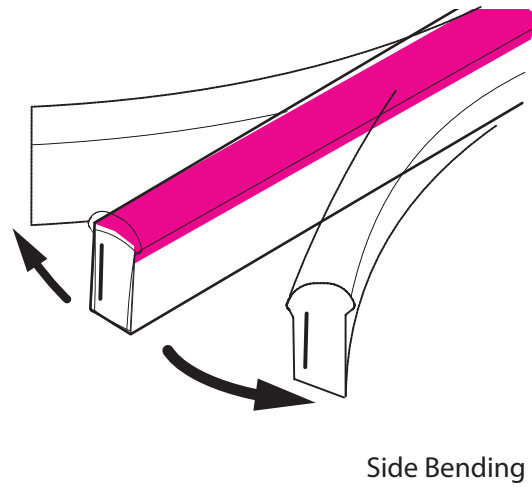
Color	Per Foot	Per Meter	Power
Red	>12.8lm	>42lm	N/A
Green	>33.53lm	>110lm	N/A
Blue	>5.49lm	>18lm	N/A
R+G+B (W)	>51.82lm	>170lm	3.66W/ft (12W/m)



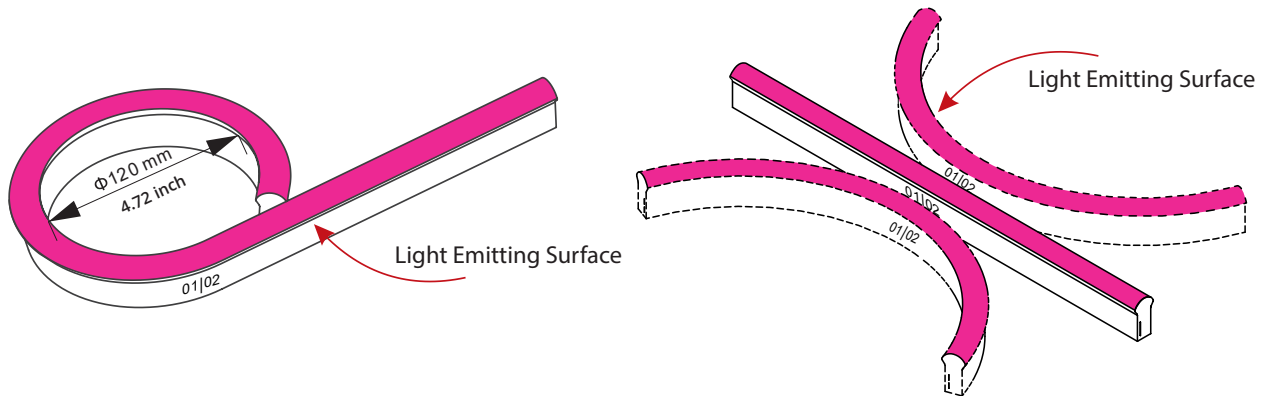
Light Profile



Bending Direction



Minimum Bending Diameter



## Fixture

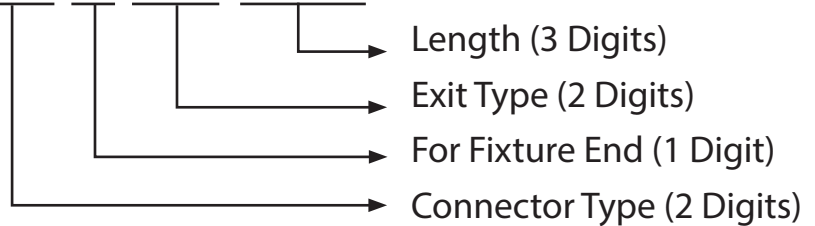
NF-11D-1-01-4W-**X**-RGB-24DV



LED Type (1 digit)
E - Epistar
N - Nichia

## Lead Connector

NA-11D-1-01-4W-**XX-X-XX-XXX-S**

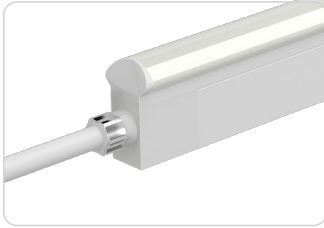


Connector Type (2 Digits)	For Fixture End (1 digit)	Exit Type (2 digits)	Length (3 digits)
SC - Snap Conenctor	1 - Input side	EN - End	0M3 - 0.98ft (30cm)
SE - Seamless	2 - Output side	BO - Bottom	01M - 3.28ft (1m)
SU - Submersible	0 - Jumpers/T-Feeds/ Seamless (or Submersible) Bottom/ Seamless (or Submersible) End	SL - Side left	03M - 9.84ft (3m)
		SR - Side right	05M - 16ft (5m)
		EJ - End jumper	10M - 32.81ft (10m)
		BJ - Bottom jumper	000 - For End Cap
		TF - Power T feed	
		EC - End Cap	

For full part number naming rules, please refer to the document on [www.glls.com/support/documentation/](http://www.glls.com/support/documentation/)

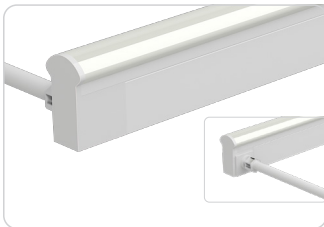
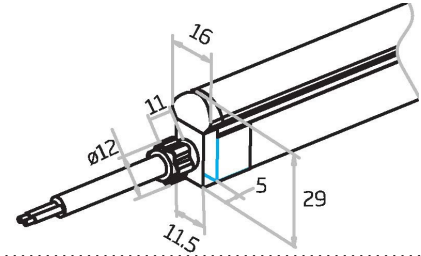
IP67: Rated for wet locations, not submersion. Factory Assembly only.

Seamless



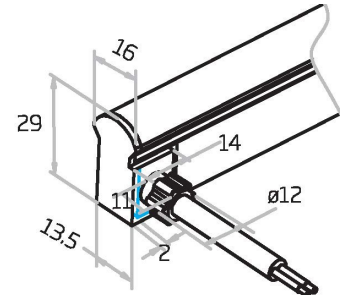
Seamless End Exit

NA-11D-1-01-4W-SE-0-EN-XXX-S



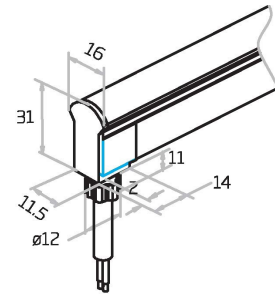
Seamless Side Exit

NA-11D-1-01-4W-SE-1-SR-XXX-S  
NA-11D-1-01-4W-SE-2-SL-XXX-S



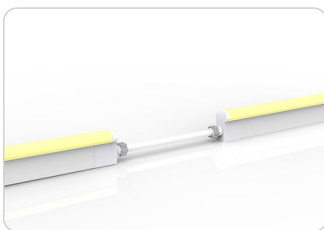
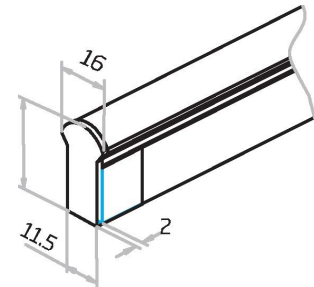
Seamless Bottom Exit

NA-11D-1-01-4W-SE-0-BO-XXX-S



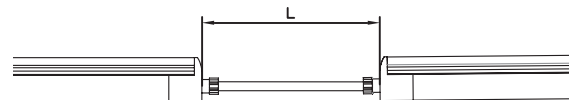
Seamless End Cap

NA-11D-1-01-0W-SE-1-EC-000-P  
NA-11D-1-01-0W-SE-2-EC-000-P



Seamless Jumper

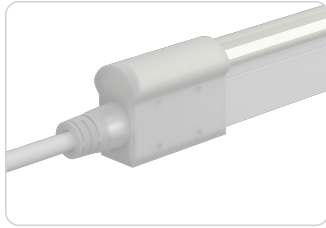
NA-11D-1-01-4W-SE-0-EJ-XXX-S



IP68: Submersible. Factory Assembly only.

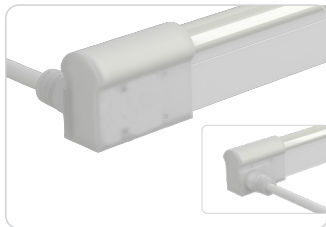
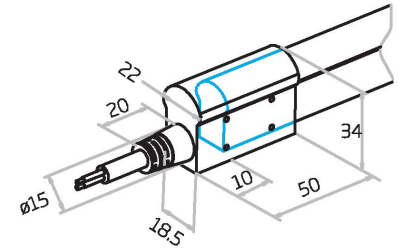


# Submersible Seamless



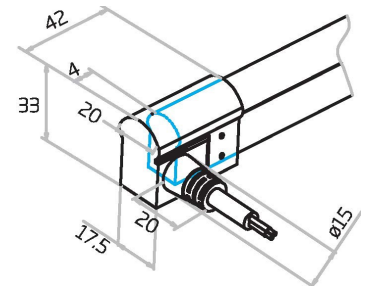
### Submersible End Exit

NA-11D-1-01-4W-SU-0-EN-XXX-S



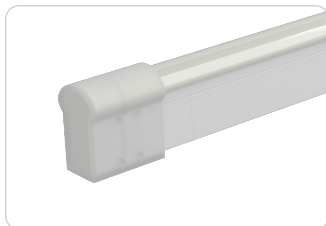
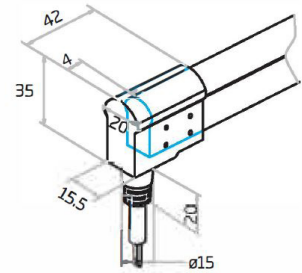
### Submersible Side Exit

NA-11D-1-01-4W-SU-1-SR-XXX-S  
NA-11D-1-01-4W-SU-2-SL-XXX-S



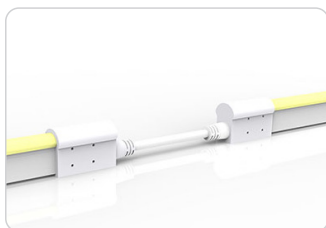
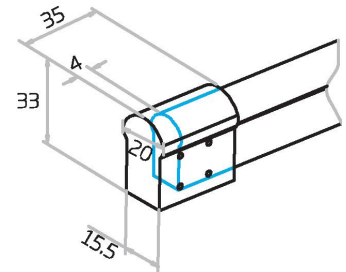
### Submersible Bottom Exit

NA-11D-1-01-4W-SU-0-BO-XXX-S



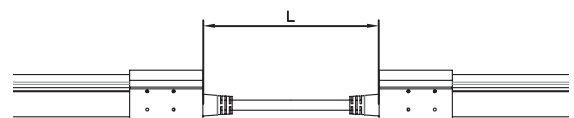
### Submersible End Cap

NA-11D-1-01-0W-SU-1-EC-000-P  
NA-11D-1-01-0W-SU-2-EC-000-P



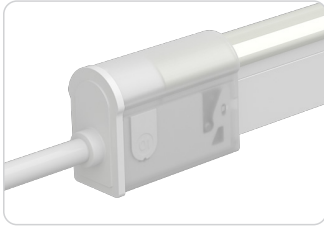
### Submersible Jumper

NA-11D-1-01-4W-SU-0-EJ-XXX-S



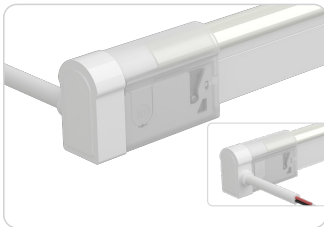
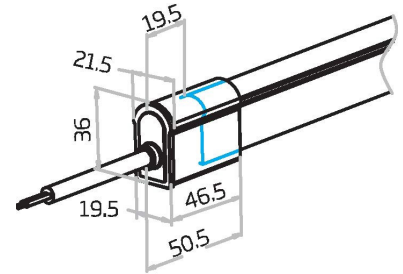


# Snap Connectors



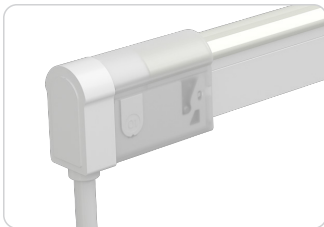
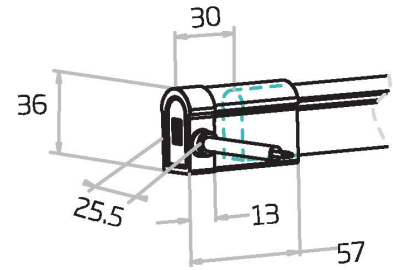
## Snap End Exit

NA-11D-1-01-4W-SC-1-EN-XXX-S  
 NA-11D-1-01-4W-SC-2-EN-XXX-S



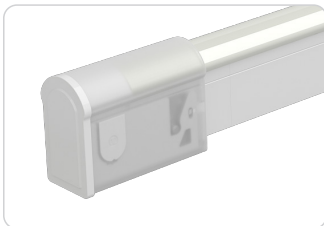
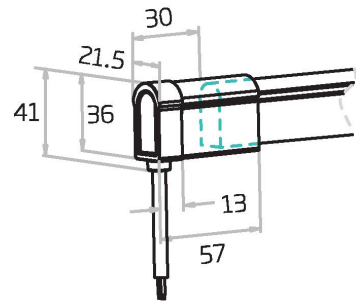
## Snap Side Exit

NA-11D-1-01-4W-SC-1-SL-XXX-S  
 NA-11D-1-01-4W-SC-2-SL-XXX-S  
 NA-11D-1-01-4W-SC-1-SR-XXX-S  
 NA-11D-1-01-4W-SC-2-SR-XXX-S



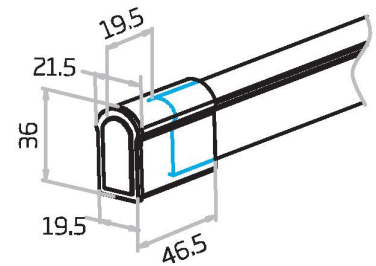
## Snap Bottom Exit

NA-11D-1-01-4W-SC-1-BO-XXX-S  
 NA-11D-1-01-4W-SC-2-BO-XXX-S



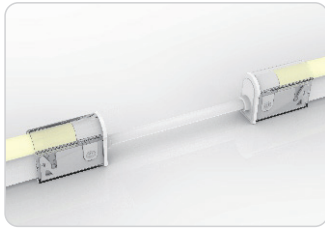
## Snap End Cap

NA-11D-1-01-0W-SC-1-EC-000-P  
 NA-11D-1-01-0W-SC-2-EC-000-P



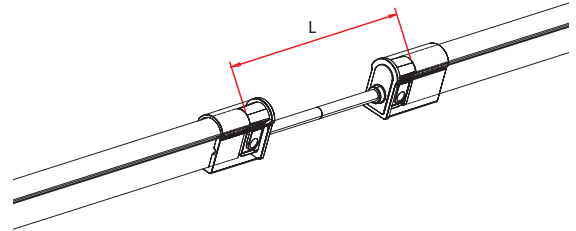
IP67: Rated for outdoor use.  
Factory Assembly or DIY.

## Snap Connectors



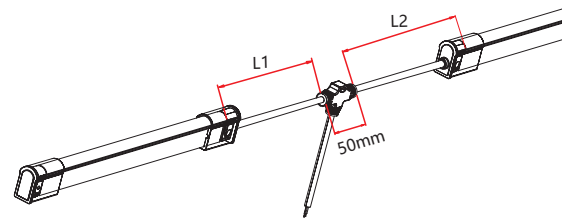
### Snap Jumper

NA-11D-1-01-4W-SC-0-EJ-XXX-S



### Snap Power T Feed

NA-11D-1-01-4W-SC-0-TF-XXX-S

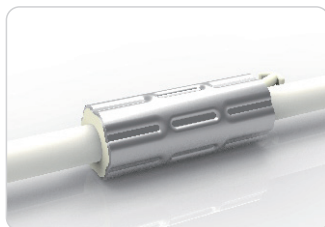
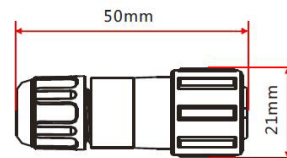


## Barrel Connectors

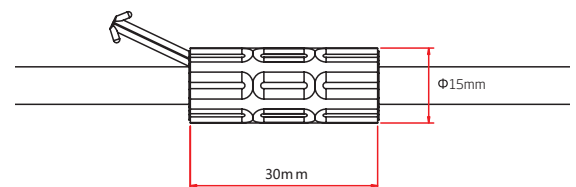


### Barrel Connectors

- NA-XX-BC-DC-CXX-F
- NA-XX-BC-DC-CXX-M
- NA-XX-BN-XXA-CXX-F
- NA-XX-BN-XXA-CXX-M
- NA-XX-PL-XXA-CXX-F
- NA-XX-PL-XXA-CXX-M



### Anti-Wicking Ferrule



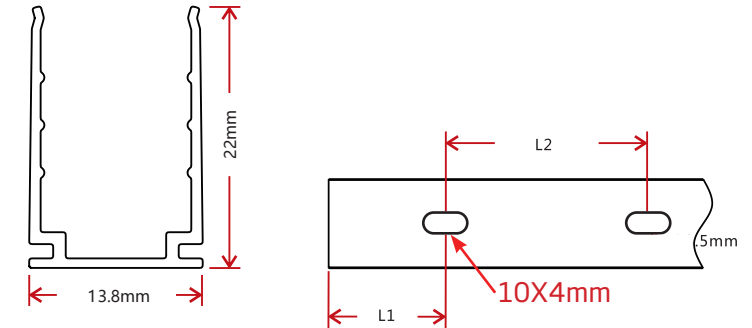
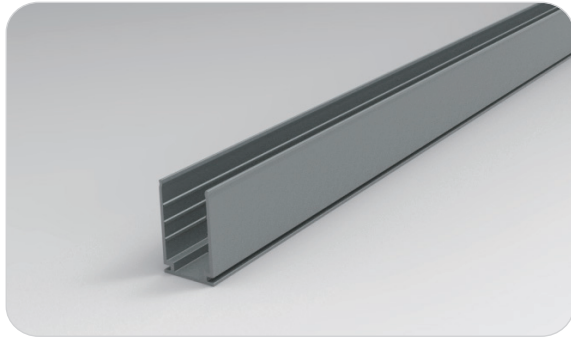
### Anvil Cutter

Optional accessory for on-site cutting.

\*Factory order only\*

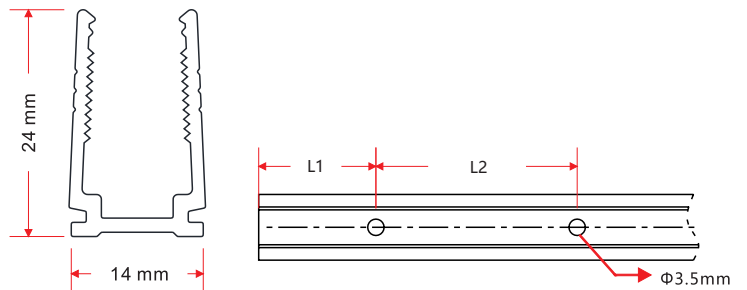


## Standard Anodized Aluminum Channel



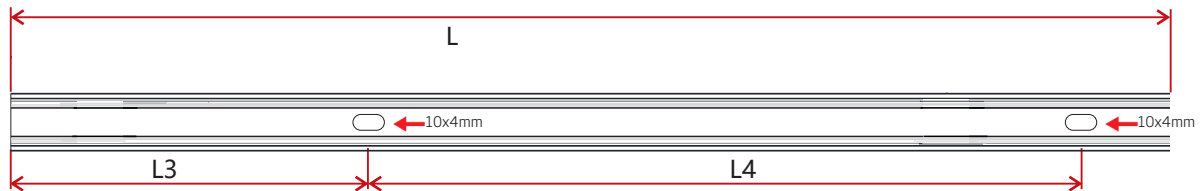
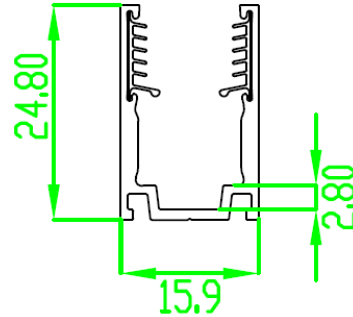
W x H	Standard Length	Part Number	L1	L2	Screw Hole $\Phi$	Hole #
0.54 x 0.87in (13.8 x 22mm)	1.38in (35mm)	CL-11-R-AL-3C5-SD	0.69in (17.5mm)	/	0.39x0.16in(10x4mm)	1
	19.69in (500mm)	CH-11-R-AL-0M5-SD	1.97in (50mm)	7.87in (200mm)	0.39x0.16in(10x4mm)	3
	39.37in (1000mm)	CH-11-R-AL-01M-SD	3.94in (100mm)	7.87in (200mm)	0.39x0.16in(10x4mm)	5
	78.74in (2000mm)	CH-11-R-AL-02M-SD	3.94in (100mm)	7.87in (200mm)	0.39x0.16in(10x4mm)	10

## Plastic Channel



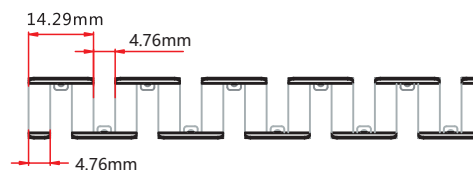
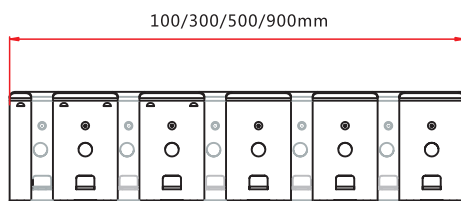
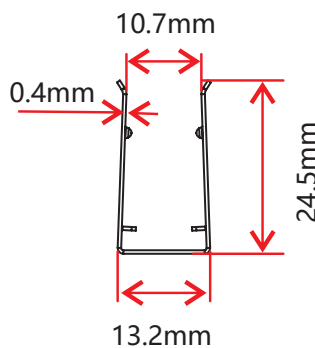
W x H	Standard Length	Part Number	L1	L2	Screw Hole $\Phi$	Hole #
0.55 x 0.94in (14 x 24mm)	19.69in (500mm)	CH-11-R-PL-0M5-SD	1.97in (50mm)	7.87in (200mm)	$\Phi$ 0.14in (3.5mm)	3
	39.37in (1000mm)	CH-11-R-PL-01M-SD	3.94in (100mm)	7.87in (200mm)	$\Phi$ 0.14in (3.5mm)	5
	78.74in (2000mm)	CH-11-R-PL-02M-SD	3.94in (100mm)	7.87in (200mm)	$\Phi$ 0.14in (3.5mm)	10

## Standard Aluminum Channel with Silicone Grip



W x H	Standard Length	Part Number	L3	L4	Screw Hole $\Phi$	Hole #
0.82 x 0.88in (20.7 x 22.3mm)	0.79in (20mm)	CL-11-R-AL-02C-SE	0.2in (5mm)	0.98in (25mm)	0.39in x 0.16in (10 x 4mm)	1
	19.69in (500mm)	CH-11-R-AL-0M5-SE	1.97in (50mm)	7.87in (200mm)	0.39in x 0.16in (10 x 4mm)	3
	39.37in (1000mm)	CH-11-R-AL-01M-SE	3.94in (100mm)	7.87in (200mm)	0.39in x 0.16in (10 x 4mm)	5
	78.74in (2000mm)	CH-11-R-AL-02M-SE	3.94in (100mm)	7.87in (200mm)	0.39in x 0.16in (10 x 4mm)	10

## Stainless Steel Flexible Channel



W x H	Standard Length	Part Number
0.52 x 0.97in (13.2 x 24.5mm)	3.94in (100mm)	CH-11-F-SS-0M1-SD
	11.81in (300mm)	CH-11-F-SS-0M3-SD
	19.69in (500mm)	CH-11-F-SS-0M5-SD
	35.43in (900mm)	CH-11-F-SS-0M9-SD

This profile can be mounted using screws in any gaps where the channel bends.

### Certifications

	Testing Organization	Certificate Serial N°	Report Reference
UL 2108	UL	20160726-E360029	E360029-2013
CE-EMC	SGS	SZEM1702001259LMV	SZEM160600421302

## Fixture Testing

### Optical Testing

Spectrum Analysis	IES LM 79 (Lumen, CCT, CRI, XY, SDCM, wavelength)
Photometric Distribution	IES LM 73 (Lumen intensity distribution & Lux diagram)
Lumen Maintenance & Lifetime	IES LM 84 & IES TM28

### Temperature Testing

Normal Temperature Test	UL1598 & UL2388 & IEC60598-1 & IEC60598-2-21
Abnormal Operation Test	UL1598 & UL2388 & IEC60598-1 & IEC60598-2-21

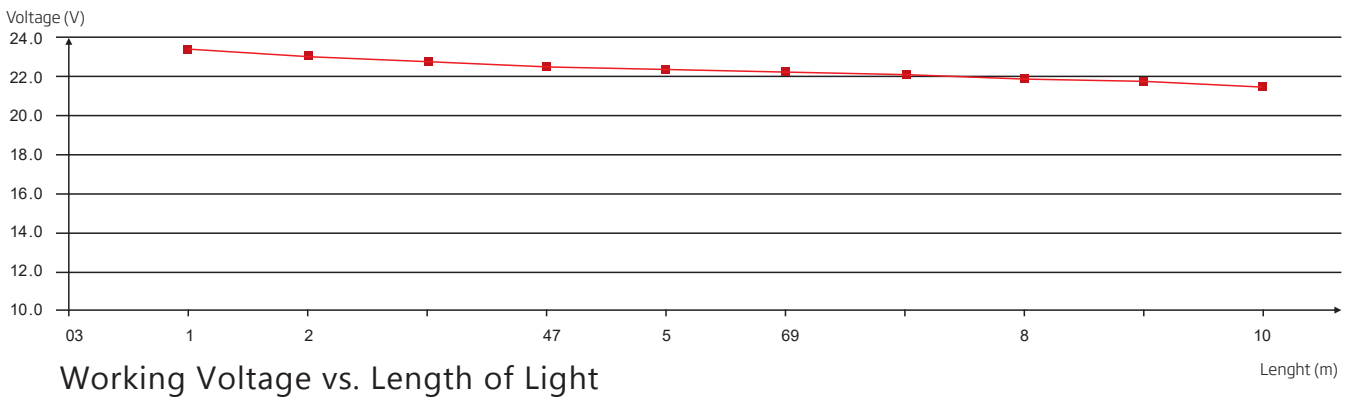
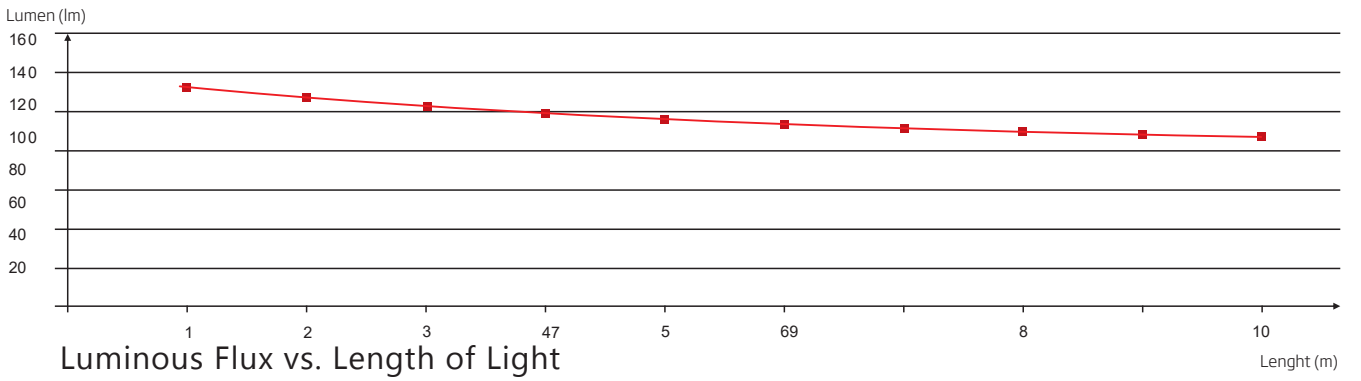
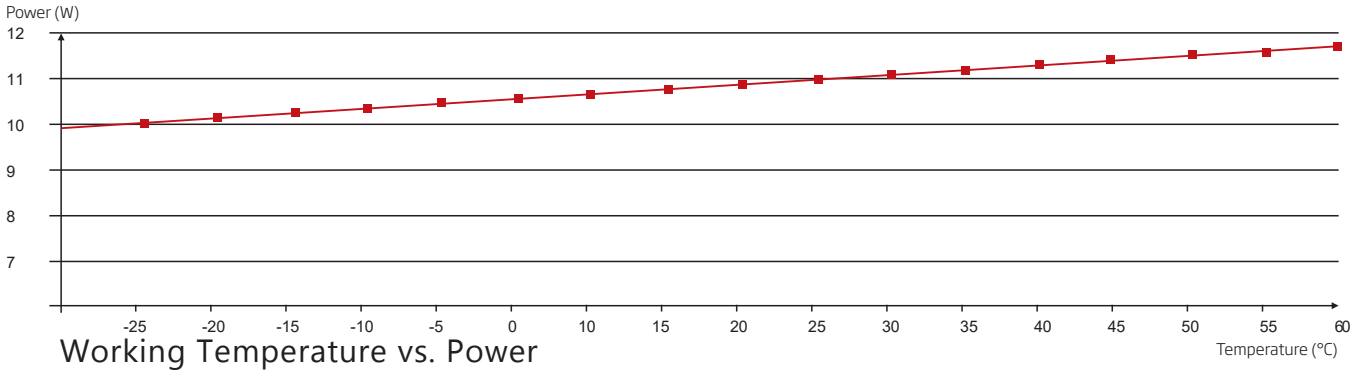
### Durability Testing

Bending Test	Manufacturer-defined, 500 cycles
Swing Test	UL2388, >750 cycles
Tensile Test	Manufacturer-defined, > the weight of light in max. connection length double feed
Twist Test	Max connection length double feed Manufacturer-defined, >200 cycles
Ball Impact	UL1598 & UL2388 & IEC60598-1 & IEC60598-2-21
IK07 IK08	IEC62262

### Environmental Testing

Chlorinated Water Immersion	BG9667, PH6.8-7.6, free chlorine 0.3-0.6mg/L
Salt Water Immersion	IEC60598-1, Salinity 4%
Salt Spray Test	IEC68-2-11
Outdoor Exposure	Manufacturer-defined
Flame Resistance	UL94
UV Exposure	ASTMG 154, ISO 4892-3, UVA @ 340nm
IPX5, IPX6, IPX7, IPX8	IEC60529
Temperature Shock	Manufacturer-defined, -40°C - 60°C (typical temperature range)
Constant Temperature	Manufacturer-defined

## Charts



# Charts

## ANSI STANDARD

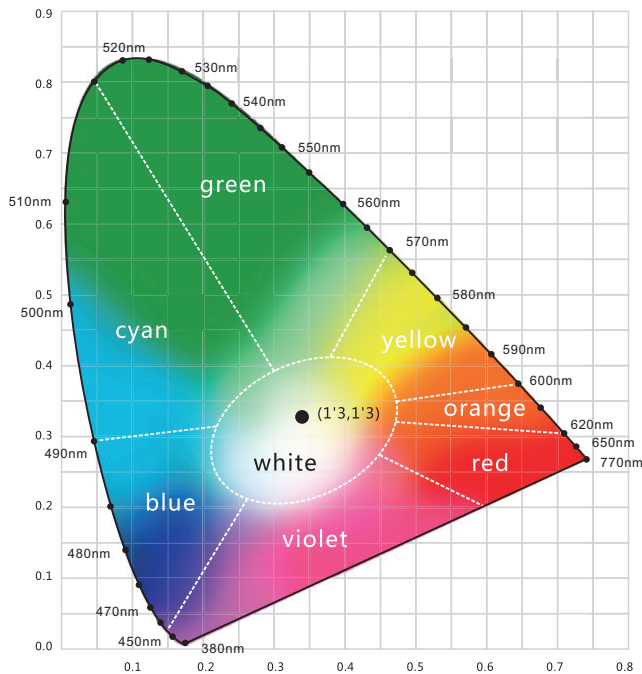
### Nominal CCT Categories

Nominal CCT	Target CCT and tolerance(K)	Target $D_{uv}$	$D_{uv}$ Tolerance Range
2200K	2238 ±102	0.0000	Tx:CCT of the source
2500K	2460±120	0.0000	For Tx<2870K
2700K	2725 ±145	0.0000	0.000±0.0060
3000K	3045±175	0.0001	For Tx≥2870K
3500K	3465±245	0.0005	$D_{uv}(Tx)±0.0060$
4000K	3985±275	0.0010	where
4500K	4503±243	0.0015	$D_{uv}(Tx)=57700 \times (1/Tx)^2$
5000K	5029±283	0.0020	-44.6 × (1/Tx)
5700K	5667±355	0.0025	+0.00854
6500K	6532±510	0.0031	

**Remark:**

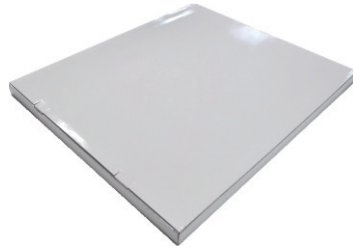
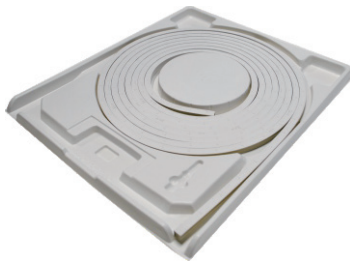
- 1)  $T_f$  is chosen to be at 100K steps (2300,2400,.....,6400K),excluding the ten nominal CCTs listed in Table 1.
- 2)  $\Delta T = 1.1900 \times 10^3 \times T^3 - 1.5434 \times 10^4 \times T^2 + 0.7168 \times T - 902.55$
- 3) Same as in the  $D_{uv}$  Tolerance Range.

Flexible CCT (2200-6500K)	$T_f^{31} \pm \Delta T^{23}$	$D_{uv} T_f^{31}$
---------------------------	------------------------------	-------------------



### Light Color

- Red**  
620-630nm
- Green**  
520-530nm
- Blue**  
465-475nm



White Box

Packing Box

Fixture Length	White Box Dimensions	Packing Box Dimensions	# Of White Boxes	Package Weight
196.85in (5m)	15.35x2.05x19.67in (39x5.2x50cm)	20.47x15.64x11.02in (52x41x28cm)	5	30.86lbs (14kg)
393.7in (10m)	20.08x2.05x24.41in (51x5.2x62cm)	25.2x20.87x11.02in (64x53x28cm)	5	57.32lbs (26kg)
393.7in (10m)	20.08x2.05x24.41in (51x5.2x62cm)	25.2x20.87x6.9in (64x53x17.5cm)	3	35.27lbs (16kg)
787.4in (20m)	26.77x2.05x31.1in (68x5.2x79cm)	31.9x27.56x4.92in (81x70x12.5cm)	2	48.5lbs (22kg)